

S.W. 1/4 OF N.W. 1/4 OF N.W. 1/4
SECTION 21, T6N., R.1W., S.L.B.&M.

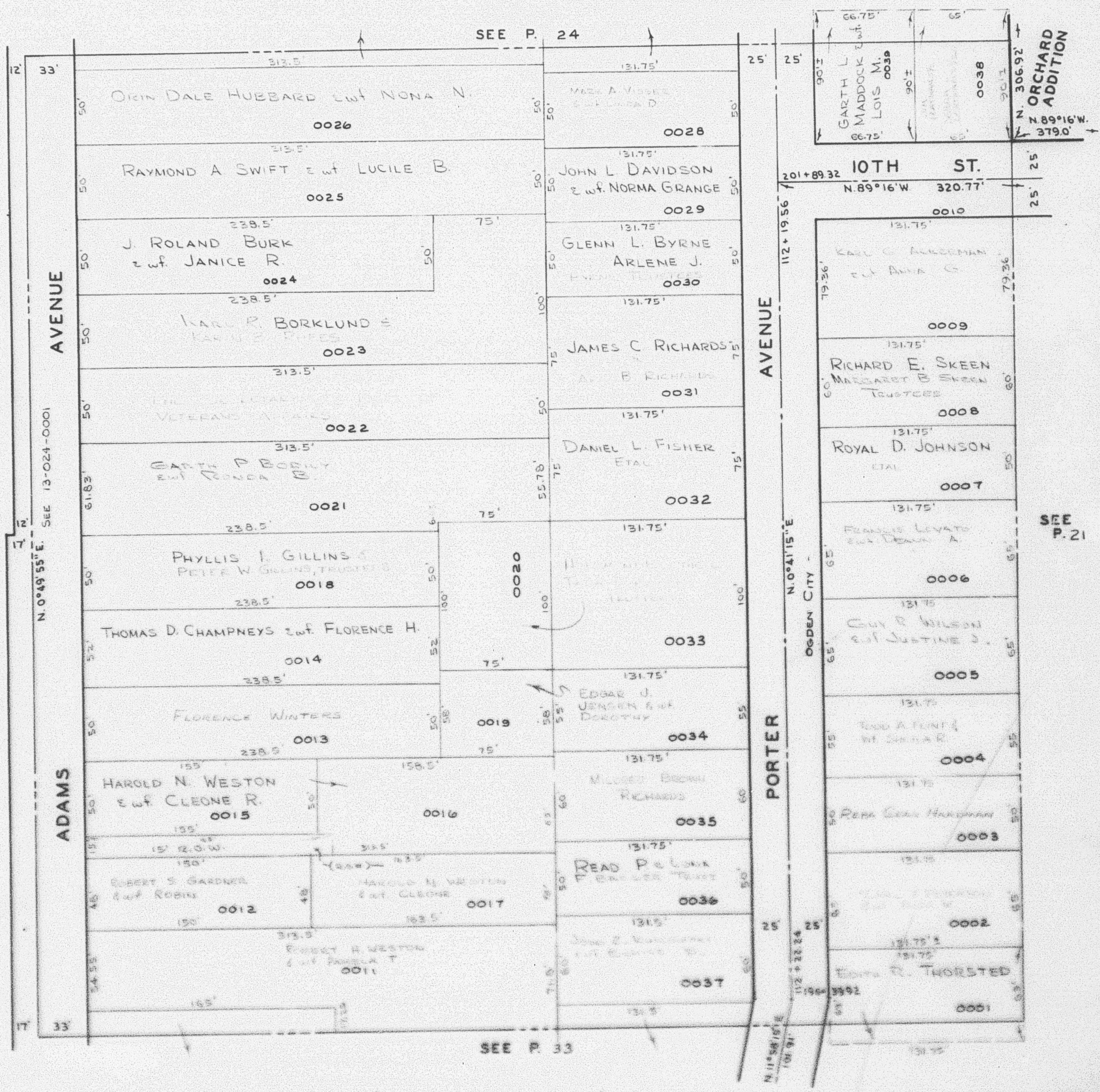
TAXING UNIT: 25

IN OGDEN CITY

PREFIX: 13-023

SCALE 1" = 50'

SEE P. 24



SEE B. 12
P. 104

SEE
P. 21